

BE AWARE THAT THE BORDERS CLASSIFICATION SECTION HAS BEEN RE-WRITTEN AND THESE TERMS ARE NOT NECESSARILY APPLICABLE.



BORDERS ON BUTTONS #2: Construction

Third in a Series of Articles Concerning Borders on Buttons

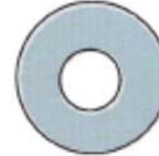
by Claudia Chaimers & Joy Journeyay

Borders have been explored in the National Button Bulletin in the September 1964 and May 1999 issues. The five border construction methods included in this article are based upon the five defined in the May 1999 article.

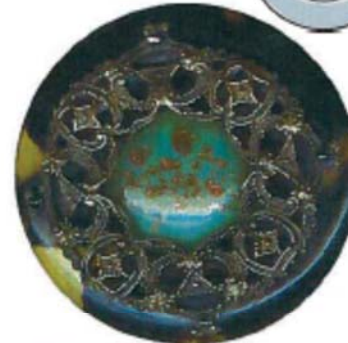
OUTER SURFACE

The border surface continues from the central design to the outside edge of the button. Notice on these examples that the border reaches the outside edge: there is no rim, band or space that sets the border apart from the edge of the button front.

FRAME Parts fitted together enclosing the central design.



OS: Stamped brass with steel OME. Rope border and rose & morning glory border.



FRAME: Celluloid. Brass and cut steels around glass with a goldstone overlay.



OS: Pewter. Shamrock border.



FRAME: Glass set in japanned metal. Galena frame border. Brass rim.

Western Regional Button Association is pleased to share our educational articles with the button collecting community.

This article appeared in the November 2008 WRBA *Territorial News*.

Enjoy! Please join WRBA! Go to www.WRBA.us

WRBA gladly offers our articles for reprint, as long as credit is given to WRBA as the source.

RIM

A separate band or piece around the outside of the button, often holding the front and back together. The border is also a "rim border" if the back of the button overlaps the button front to form a rim.



RIM: Painted ___ with brass rim.



RIM: Brass rim around painted fly and saw-tooth border on a ___ button.



RIM: Gln barl with white metal rim.



RIM: Brass with brass rim.



EDGE: Enamel. Rope edge border.

EDGE BORDER

Order on the outside edge surface of the button.



Engraved pearl and gilt. Cut steel OME. Stylized plant life border. This is an uneven border, but it is NOT an interrupted border.



Steel cup. Border interrupted by the leaves.

INTERRUPTED A border that has a break or interruption from continuing around the button.



Pierced burwood. Rope border interrupted by bird tail and head.



French White button in an art nouveau interrupted border of daisies.



Original tine peacock. Plant border interrupted by bird tail.



Stamped brass. Border interrupted by dragon head, hand and sword.